

62

THREADNEEDLE

62THREADNEEDLE.COM



# THE BEAT GOES ON

Threadneedle Street is in the heart of the City of London. A famous street that marches to the beat of commerce.

No. 62 Threadneedle is next to the Bank of England and opposite The Royal Exchange, with a modern and sophisticated refurbishment, it delivers a healthy work environment for its inhabitants.



THE BUILDING





# THE HEART AND SOUL



From the entrance of the building to its landscaped terraces, 62 Threadneedle breathes heart and soul into the working environment.

The new repositioned entrance on Threadneedle Street welcomes visitors into a large contemporary reception area. A second entrance on Bartholemew Lane will provide independent access to the self contained ground floor office.

A fresh and vibrant workplace, refurbished and extended throughout with landscaped terraces on the 1st, 2nd and 3rd floors. Brand new cycle storage and shower facilities in the extended basement make a healthier commute a breeze.

The beauty of the interiors is echoed on the outside, with new cladding at ground floor level creating a grand and striking focal point on this iconic City street.



THE BUILDING





THE BUILDING



62 THREADNEEDLE STREET  
62S CO-WORKING 01  
62S CO-WORKING 02  
RECEPTION 03  
VAULT COMMS 04  
VAULT COMMS 05  
62S RECRUITING 06  
62S RECRUITING 07



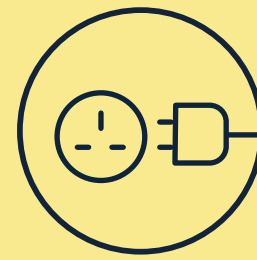


62 THREADNEEDLE STREET  
ZONES CO-WORKING 01  
ZONES CO-WORKING 02  
OFFICE 03  
NOVA TELECOMMS  
NOVA TELECOMMS  
OFFICE RECRUITING  
OFFICE RECRUITING



# SUMMARY SPECIFICATION & AMENITIES

---



Bike/scooter  
charging



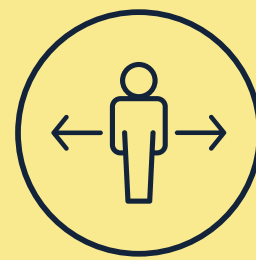
Energy efficient LED lights  
with daylight dimming



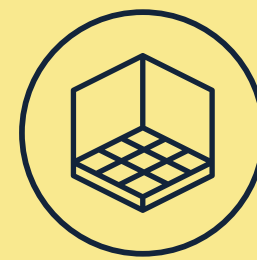
Terraces on 1st,  
2nd and 3rd floors



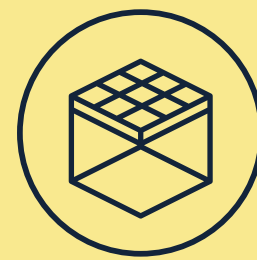
Accessible  
parking space



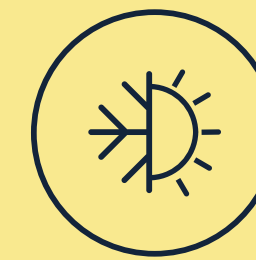
Occupancy 1:8



Raised  
access floors



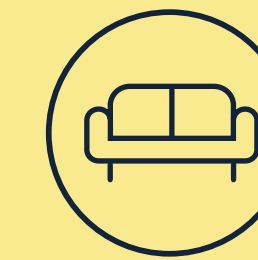
Semi-exposed  
raft ceiling



Air conditioning



Male and female  
showers



New reception



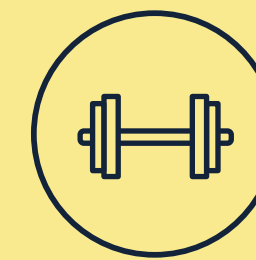
3 x passenger  
lifts



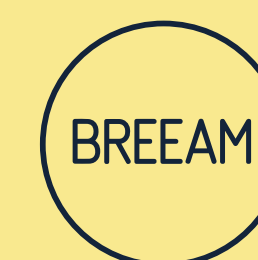
64 bicycle spaces +  
14 Brompton lockers



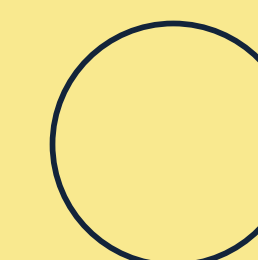
64 lockers



Private lower  
ground floor gym



BREEAM  
Excellent

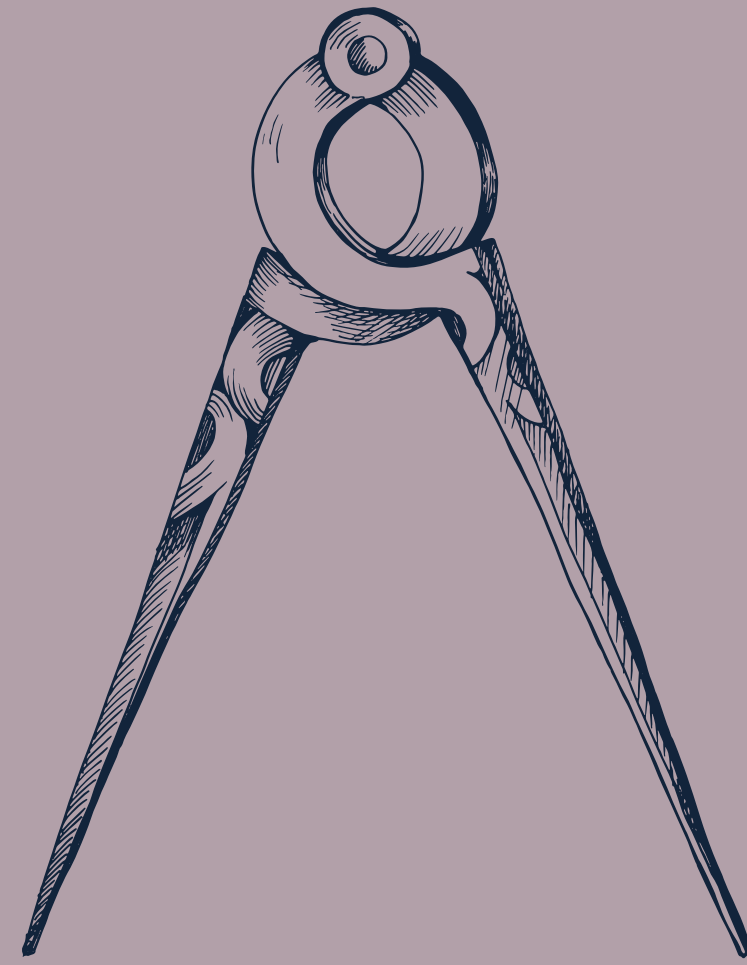


Wiredscore TBC



# LOWER GROUND

1,614 sq. ft | 150 sq. m



## FLOOR AREAS

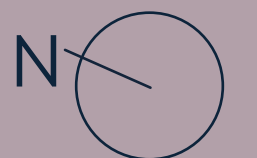
	SQ. M (NIA)	SQ. FT (NIA)	Availability	Terrace SQ. FT
Third	635	6,835	Let	559
Second	695	7,481	Available	570
First	757	8,148	Available	301
Ground (Retail/Office)	120	1,291	Available	
Ground	394	4,240	Available	
Lower Ground (Retail)	150	1,614	Available	
<b>Total</b>	<b>2,751</b>	<b>29,609</b>		<b>1,430</b>



Threadneedle Street

Bartholomew Lane

- Core/Loading
- Changing rooms/showers
- Cycle storage
- Retail/Office

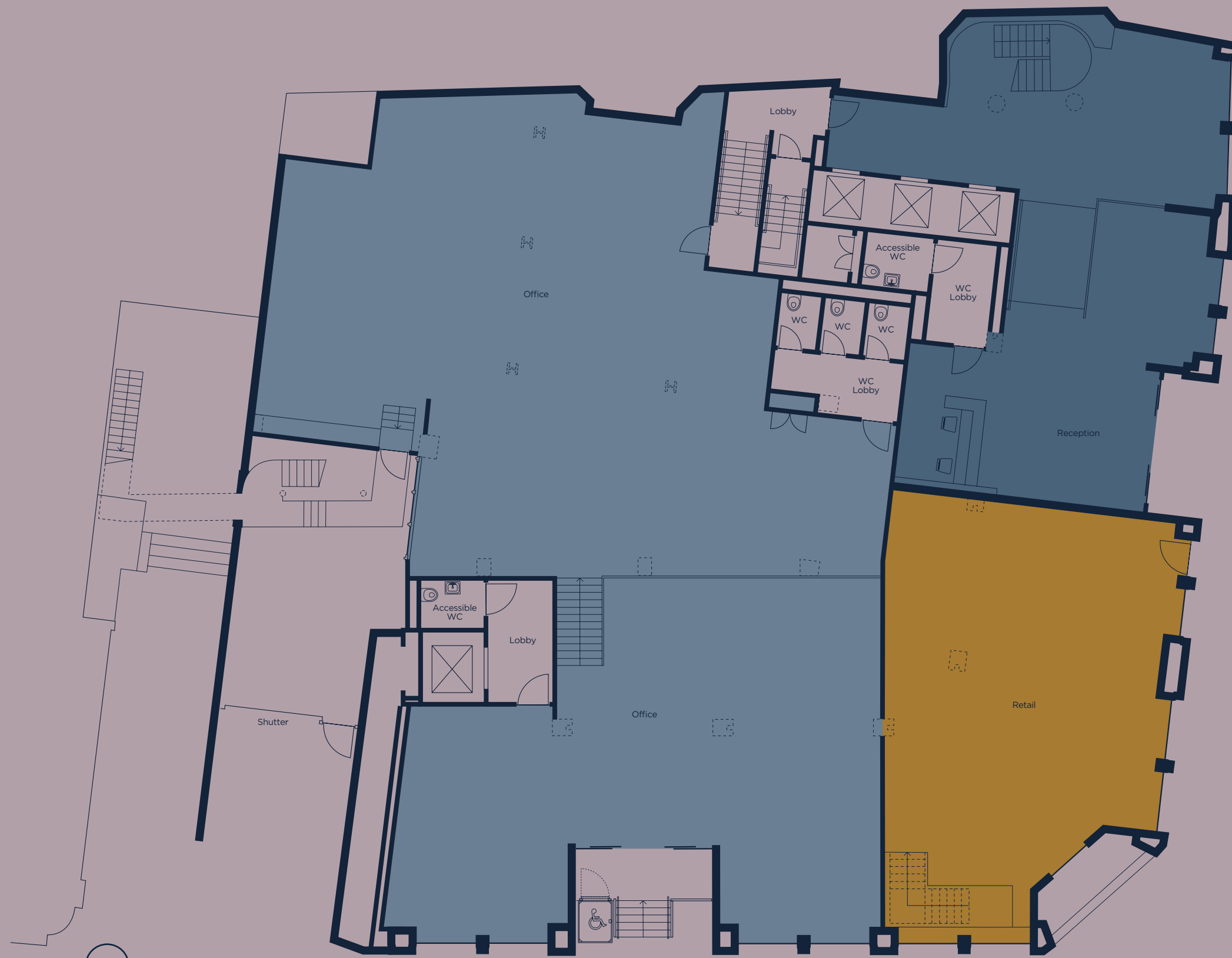




ACCOMMODATION

# GROUND

Retail 1,291 sq. ft | 120 sq. m  
Office 4,240 sq. ft | 394 sq. m



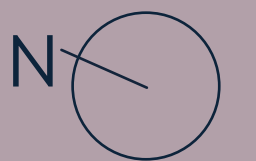
- Core
- Office
- Reception
- Retail

# FIRST

8,148 sq. ft | 757 sq. m  
Terrace 301 sq. ft | 28 sq. m



- Core
- Office
- Terrace

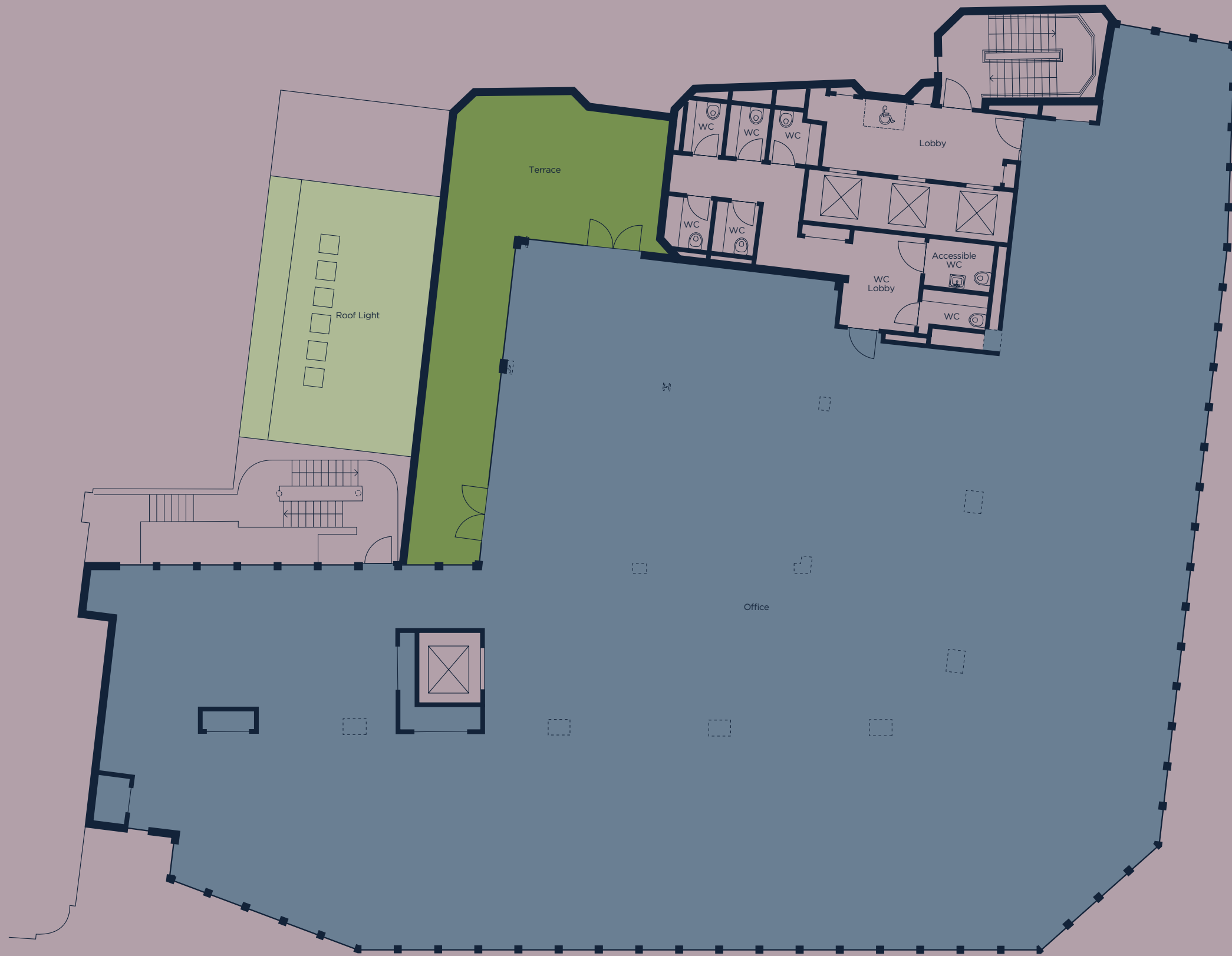




ACCOMMODATION

## SECOND

7,481 sq. ft | 695 sq. m  
Terrace 570 sq. ft | 53 sq. m

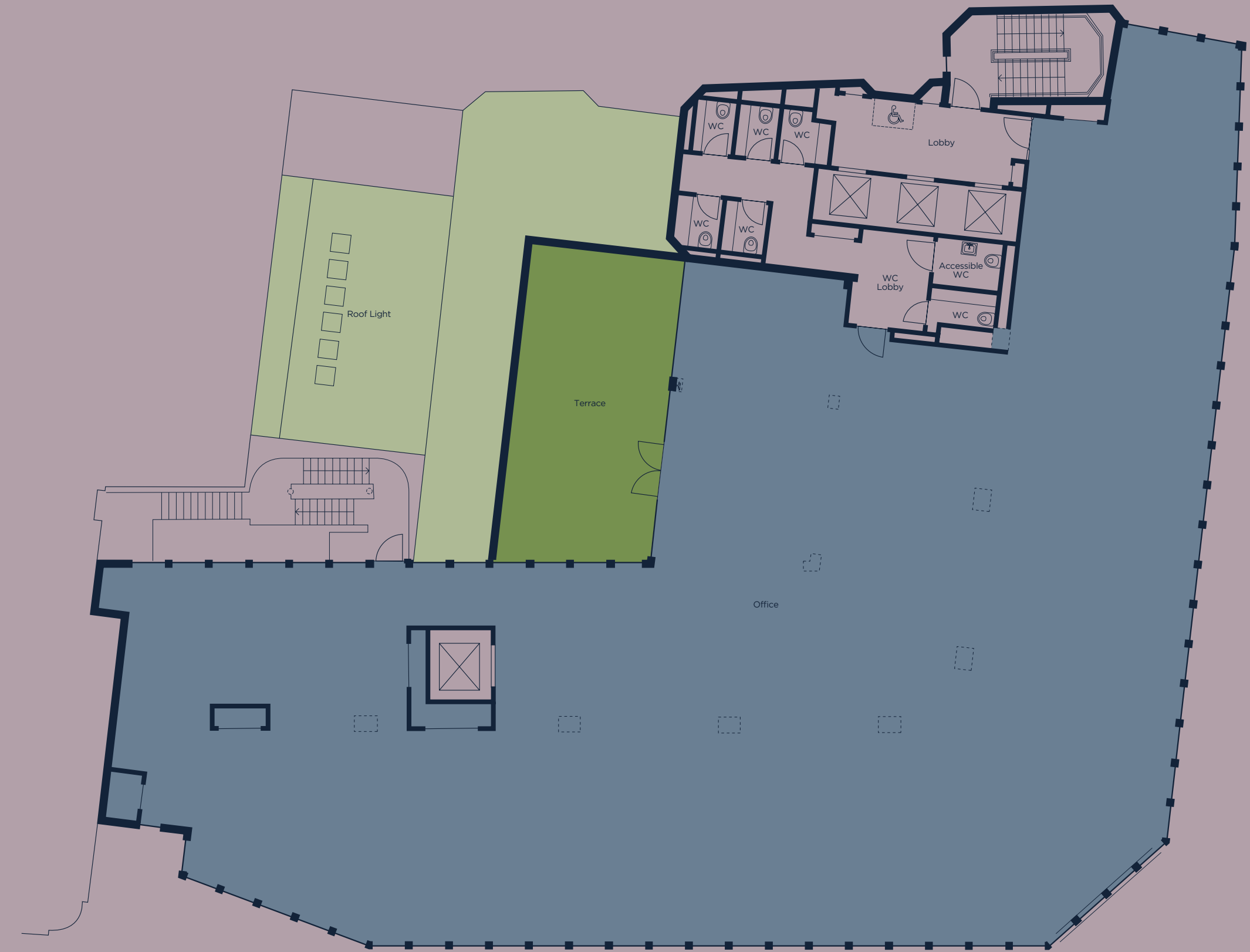


- Core
- Office
- Terrace

Bartholomew Lane

## THIRD

6,835 sq. ft | 635 sq. m  
Terrace 559 sq. ft | 52 sq. m



- Core
- Office
- Terrace

Bartholomew Lane

Threadneedle Street

Threadneedle Street









OFFICE FLOORS





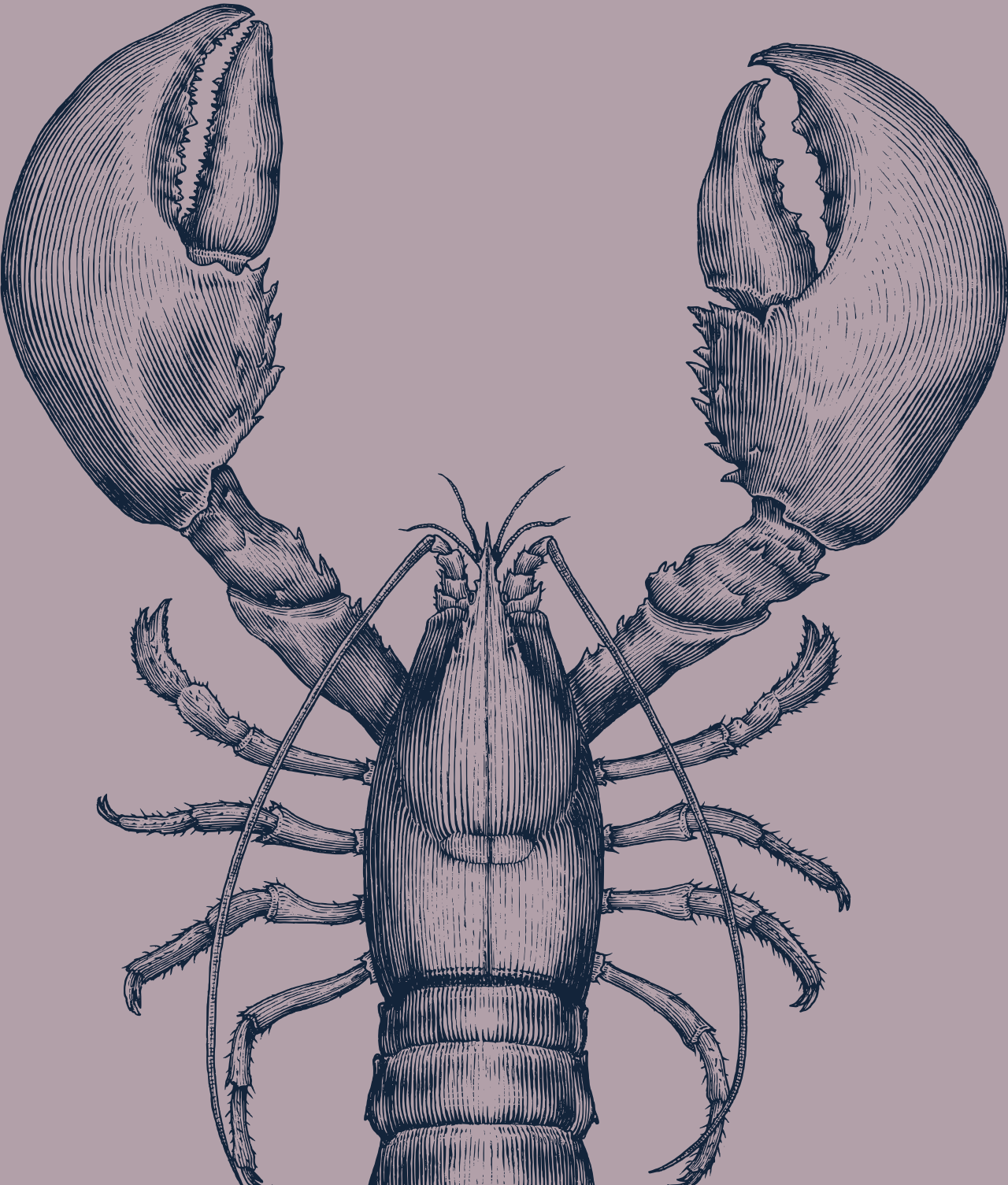
OFFICE FLOORS





# ON THE PULSE

Delve into City life at its finest. Restaurants, bars, shops galore – from the biggest names to the cool independents, Threadneedle Street is in the thick of it all.













# MOVE TO THE BEAT



From Bank



Bond Street  
8 mins

Canary Wharf  
11 mins

Kings Cross  
11 mins

City Airport  
21 mins

From Liverpool St.



Tottenham Court Road  
10 mins

Stratford  
8 mins

Heathrow  
33 mins

Stansted  
47 mins



From 62 Threadneedle

London Bridge  
3 mins

Liverpool St.  
2 mins

City Thameslink  
4 mins

Blackfriars  
5 mins



From 62 Threadneedle

Bank  
1 min

Monument  
4 mins

Cannon St.  
6 mins

Liverpool St.  
7 mins

\*All times according to TFL



# WITHIN 100 YARDS

- 1 The Ned:
  - The Nickel Bar
  - Kaia
  - Electric Bar & Diner
  - Lutyens Grill
  - Malibu Kitchen
  - The Parlour
- 2 The Royal Exchange:
  - Oeno
  - The Fortnum's Bar & Restaurant
  - Grind cafe-bar
  - Mister Lasagne
  - Laduree
  - City Roy London
- 3 1 Lombard Street
- 4 The Trading House
- 5 Le Relais de Venise l'Entrecôte
- 6 Goodman City
- 7 Brasserie Blanc
- 8 Merchant Taylors Hall
- 9 Mint Leaf Lounge
- 10 M Threadneedle Street
- 11 Natural Kitchen
- 12 City Social





CONTACT



THREADNEEDLE

FOR ANY FURTHER INFORMATION

---

**Matthew Causer**  
mcauser@farebrother.com  
+44 (0)7990 975 969

**Peter Lance**  
peter.lance@allsop.co.uk  
+44 (0)7813 046 926

**Mark Anstey**  
manstey@farebrother.com  
+44 (0)7841 684 901

**James Neville**  
James.Neville@allsop.co.uk  
+44 (0)7789 658 540

**Milly Mitchell**  
mmitchell@farebrother.com  
+44 (0)7701 287 084

[62THREADNEEDLE.COM](https://www.62threadneedle.com)

Misrepresentation Act: Farebrother and Allsop gives notice that these particulars are set out as a general outline only for the guidance of intending Purchasers or Lessees and do not constitute any part of an offer or contract. Details are given without any responsibility and any intending Purchasers, Lessees or Third Party should not rely on them as statements or representations of fact, but must satisfy themselves by inspection or otherwise as to the correctness of each of them. No person in the employment of Farebrother and Allsop has any authority to make any representation or warranty whatsoever in relation to this property.